

Florence Road, SW19

Approximate Gross Internal Area
Ground Floor = 50.2 sq m / 540 sq ft
First Floor = 37.3 sq m / 401 sq ft
Second Floor (Including Eaves)
26.5 sq m / 285 sq ft
Total = 114 sq m / 1226 sq ft



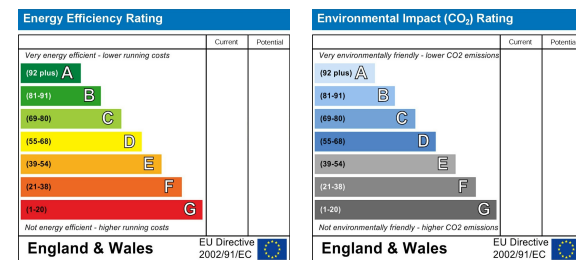
This floor plan is for representation purposes only and is not drawn to scale. The Gross Internal Area includes outbuildings shown on the plan. Whilst every attempt has been made to ensure the accuracy of the plan measurements of doors, windows and rooms are approximate only and should be checked before making any decisions reliant upon them.
Copyright Bespokeplans.co.uk (ID741974)

FOR A FREE MORTGAGE QUOTE AND BEST MORTGAGE RATES, CALL ELLISONS MORTGAGE ADVISOR ON 020 8944 9494

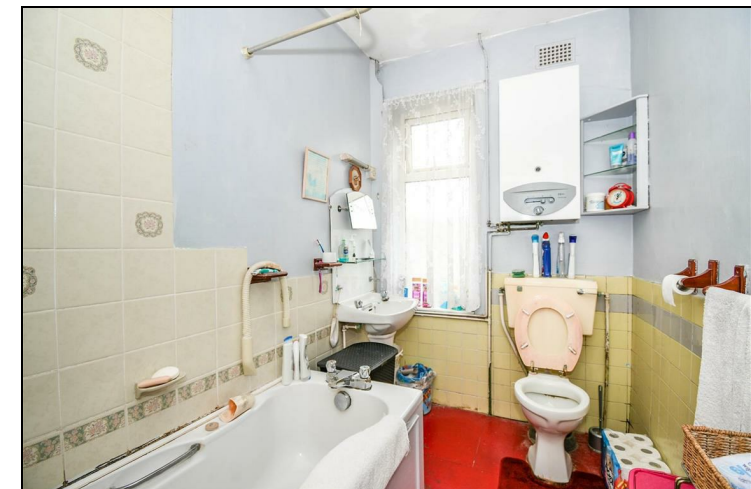
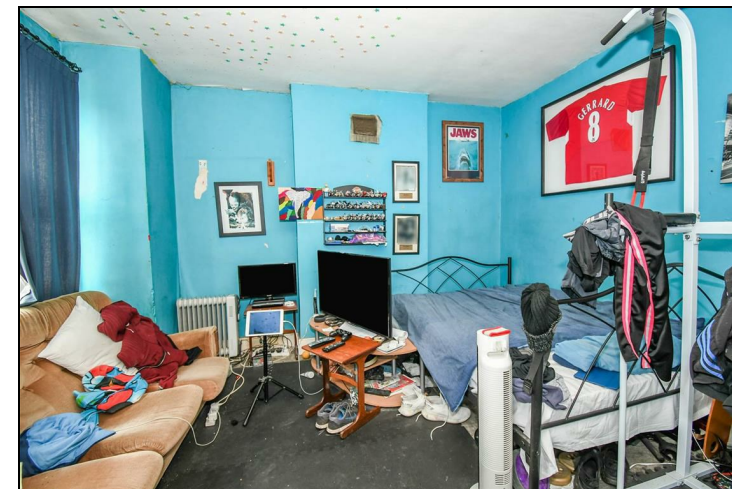
Florence Road Wimbledon, SW19 8TN



£775,000: Freehold



A two double bedroom, end terrace Victorian home with a wider than average plot, a South-facing garden, garage and off-street parking. In need of modernisation and with potential to extend subject to the usual consents this unique property also has the benefit of no onward chain.



SPECIFICATION:

- Two Bedroom Victorian House
- In Need of Modernisation
- Potential to Extend STPP
- South-Facing Garden
- Off-Street Parking
- End Terrace
- Garage
- Unique Property